

# The Hackney Terrier

# 83

*The Friends of Hackney Archives Newsletter*

Winter 2009



## Recent accessions to the archives

### **Kemble & Co, piano manufacturers**

This autumn we've been given a rather important business collection. Kemble & Co. were the UK's last large-scale piano manufacturer. Unfortunately, as you may have seen in the news, they were forced to close at the end of October. For the last 40 years they have been based in Bletchley, Milton Keynes, but the business actually started up in 1911 at Carysfort Road in Stoke Newington. It was based there for almost 70 years. The Company have not forgotten their roots and have been kind enough to give us their archives.

There are about 1.5 metres of records in all. These include deeds for the old factory on Carysfort Road, documents relating to the incorporation of the Company in 1947 and plans and building records for the factory at Bletchley. There are also sale catalogues and price lists from various dates, which give an idea of the different types of piano manufactured over the years, plus a large number of publicity photos of different piano models.

My favourite records are the volumes recording the manufacture of the individual instruments. These give the piano number and have columns for each part of the manufacturing process to be signed off, showing who carried out that part of the production. It gives an impression of the care and individual attention paid to each separate instrument. Unfortunately these volumes only survive for some parts of the company's history, but they are still a fascinating record.



The cataloguing date for the Kemble archives is going to be a bit dependant on our move next year, but I hope to be able to update you about it in a future *Terrier*.

### **St. Michael's, Mark Street, Shoreditch**

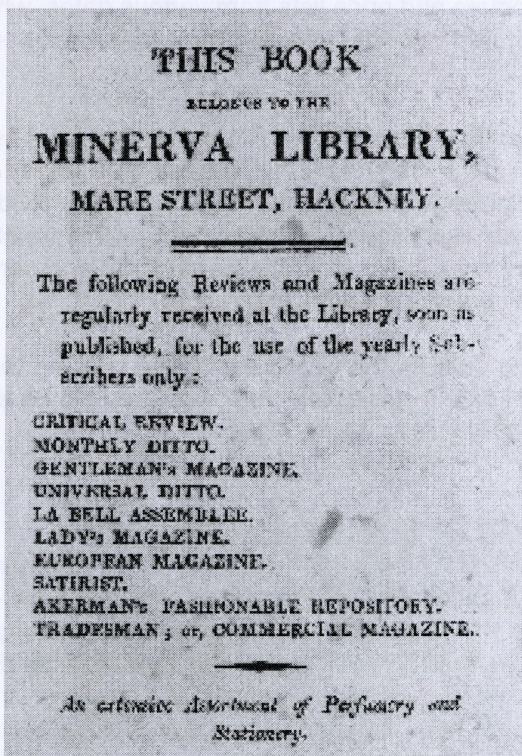
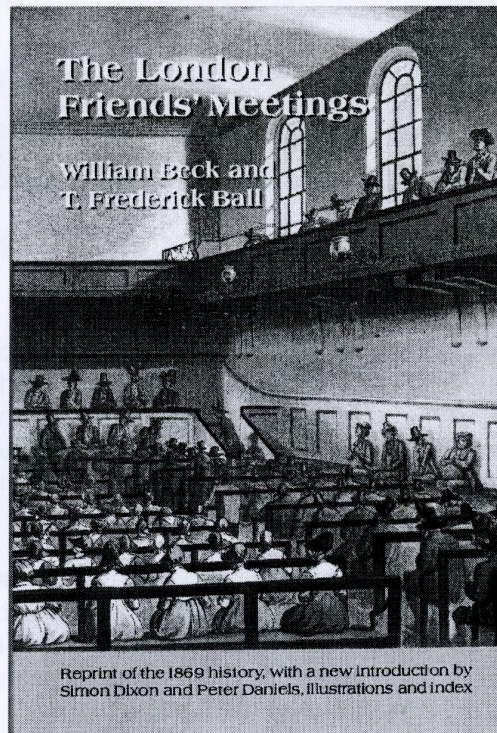
This great drawing, dating from 1928, is of the interior of St. Michael's, Mark Street, in Shoreditch (which became a showroom and warehouse for an architectural ironmongery business). It was drawn by Winifred Rowe, and was donated to us last month by her niece, along with another from a different angle drawn in 1931. We have several photos and drawings of this church from the outside, but very few interiors.

**Siân Mogridge**  
*Archivist*

## Additions to the Local Studies Library

Many thanks to the Friends for their generous purchase of a copy of William Beck and T. Frederick Ball's *The London Friends' Meetings* (ISBN 978-0-9556183-4-5, Pronoun Press, £36.00). This is a reprint of the 1869 history of the Society of Friends in London, with a new introduction by Simon Dixon and Peter Daniels, and contains valuable information regarding Stoke Newington as well as some on Hackney and Shoreditch. (Shelved at 261 SR)

Thanks also to Mrs Langstaff of the Friends for her donation of a copy of *Hackney: local government and industry*. Although we already have copies of this 1948 publication it is always good to receive another as it is such a very useful resource, packed with information and illustrations of Hackney just after the war. (Shelved at 902.2 SR)



*This library label affords an insight into an 18th century Hackney business and its clientele*

Mr D.M.F. Jones of Clapham very kindly donated a copy of the second volume of *The Adventurer* magazine from 1753. The publication itself has no Hackney connection, but this particular copy once belonged to the Minerva Library in Mare Street, as the label (left) pasted inside the front cover shows. Despite the lack of Hackney-related material within the magazine, we are certain that articles such as 'Directions to the ladies, for their conduct to a husband', 'How far the precept to love our enemies is practicable', and 'The fatal effects of false apologies and pretences' will prove to be of invaluable interest to all! (Shelved at 100 SR)

**Sally England**  
**Local Studies Librarian**

## Publications available from Hackney Archives

### New titles

*Hackney modern, restored, forgotten, ignored : 40 buildings to mark 40 years of the Hackney Society* edited by Lisa Rigg (£14.95)  
40 articles by 40 contributors drawing attention to 40 examples of good-quality modern architecture, recent restoration projects, lost buildings, and buildings currently at risk from neglect or demolition.

*The Shoreditch Tales* by Carolyn Clark and Linda Wilkinson (£9.95)

A new publication from the Shoreditch Trust in which living memories and historical documents are linked to tell humorous, honest, and moving tales encompassing centuries of everyday life in Shoreditch.

### Still available - a reminder!

*Strength in the Tower : an illustrated history of Hackney* by David Mander (£9.99)

Drawing on Hackney Archives' documentary and visual collections to tell the story of Hackney from Roman times to the present, describing the changes from country parish to today's rich and diverse community.

### Special offers

*Glimpses of ancient Hackney and Stoke Newington* by Benjamin Clarke (£5.00)

A reprint - with index, and an introduction and notes by David Mander - of local doctor Benjamin Clarke's book of 1894, in which he recalled the Hackney of his childhood. Essential reading for anyone interested in the Hackney that preceded the Victorian developers.

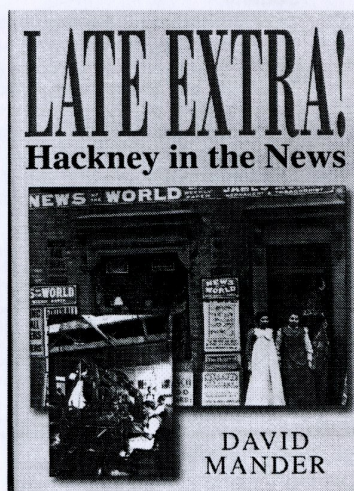
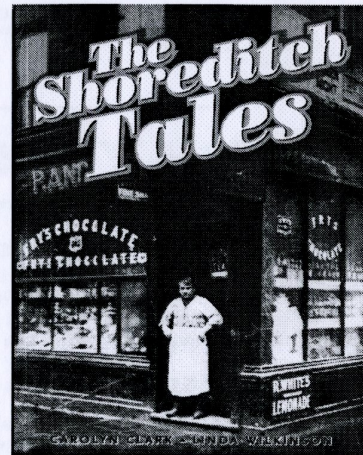
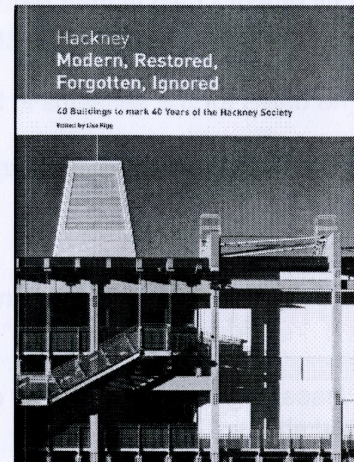
*Late Extra! Hackney in the news* by David Mander (£5.00)

A vivid picture of life in Hackney as seen and recorded by local newspapers over the last 250 years, including over 150 illustrations from the Hackney Archives image collection and the newspapers themselves.

### Hackney History back copies

The order sheet enclosed offers a few ex-library copies of (out of print) volumes 1, 2 and 8 at reduced prices. **As so few copies are available, please contact Hackney Archives to check availability before sending any money.**

**NB: All cheques to be made payable to London Borough of Hackney. Check the amount for postage from the website, or by telephoning. Payment by credit/debit card can be taken for amounts over £5.00.**



## The Hackney Terrier

### A step by step guide to the Archives

Continuing our series of free basic introductions to the Archives, for beginners or people who need a bit of extra help in their research. These sessions are called **Exploring Hackney's Past: a step-by-step guide to Hackney Archives.**

The dates for the sessions in 2010 are as follows:

Wednesday 20 January 2010	10am-12pm
Friday 19 March	10am-12pm
Thursday 20 May	2-4pm
Friday 9 July	10am-12pm
Wednesday 22 September	2-4pm
Friday 19 November	10am-12pm

Please ring 020 72412886 or email [archives@hackney.gov.uk](mailto:archives@hackney.gov.uk) to book a place on any of these workshops.



THE EAST OF LONDON FAMILY HISTORY SOCIETY  
Founded 1978. Member of the Federation of Family History Societies

01

Registered Charity N<sup>o</sup> 1094419

## FAMILY HISTORY FAIR

Saturday 23<sup>rd</sup> January 2010

Admission free!

At Eastbury Comprehensive School, Barking, Essex, IG11 9TR  
(Entrance in Wilmington Gardens)

150 parking spaces on site and parking available in nearby streets.  
Refreshments available within the Fair or bring your own packed lunch.

### Theme: Health & Social Welfare

- Help and advice from experienced researchers.
- Over 150 stalls including S&N Genealogy, G.O.O.N.S, Friends of Hackney Archives, Society of Genealogists, The Whitechapel Society.
- Over 30 History & Family History Societies are participating.
- A display loaned by the Royal London Hospital.
- Book signing by Sarah Wise (author of *The Blackest Streets*), Gilda O'Neill (Broadcaster, Novelist and History Writer) and Fiona Rule (Author of *'Worst Street in London'*).
- A range of family history books, CD's and products on sale – many at reduced prices.
- Talks which can be booked in advance or on the day. There is a charge of £2 for each of the talks or you can attend all three talks for £5

- > 10.00 Michael Peet on *'Clara Grant, the Farthing Bundle Lady of Bow'*
- > 11.30 Christine Wagg (Peabody Trust) on *'Healthy Housing for Working People'*
- > 3.15 Sarah Wise on *'Health & Social Conditions in the East End'*

To find out about membership and the exciting programme offered by our 4 branches covering that part of Greater London, north of the Thames, east of the old City of London gates of Aldgate and Bishopsgate, and through the London Boroughs of Tower Hamlets, Hackney, Newham, Barking & Dagenham and Redbridge to the edge of Metropolitan Essex at Havering (roughly up to the M25)

For more details, visit our website [www.eolfhs.org.uk](http://www.eolfhs.org.uk)

### The Friends of Hackney Archives

constitute an independent charity (no. 1074493) dedicated to supporting the Borough's archives, and promoting local history in the area of the former metropolitan boroughs of Hackney, Shoreditch and Stoke Newington.

Membership is open to all. The subscription is £10 in the UK (plus £2 for each additional member at the same address) and £20 sterling overseas. The subscription runs for a calendar year and includes at least three issues of the *Hackney Terrier* and a copy of the journal *Hackney History*.

The Friends can be contacted via -

**Hackney Archives Dept,**  
43 De Beauvoir Road,  
London N1 5SQ,  
tel 020 7241 2886,  
fax 020 7241 6688,  
or e-mail  
[archives@hackney.gov.uk](mailto:archives@hackney.gov.uk)

Contributions to future issues of the *Hackney Terrier* should be sent to Sally England at the above address.